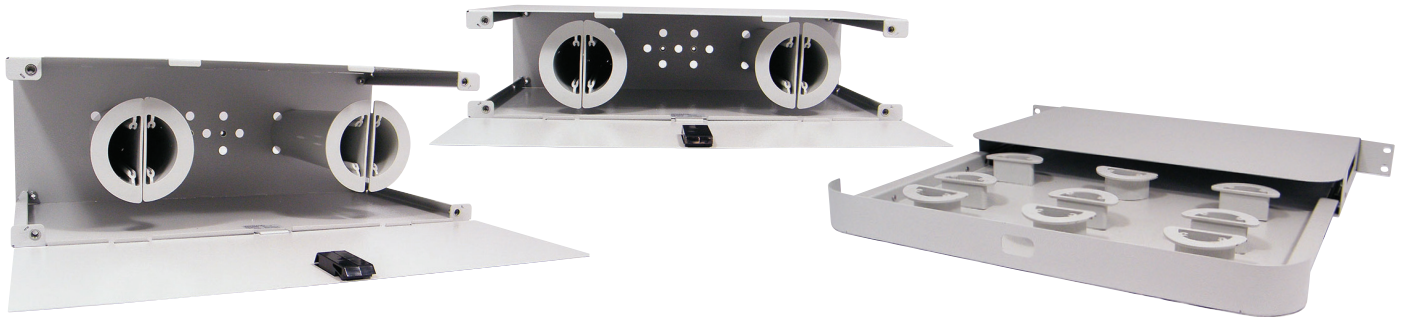


SUBRA JIM Jumper Manager Shelf



Focus-Subra Jumper Management Shelf is a mechanical shelf assembly which can be used either to store overlength of jumpers or to route them from one lateral duct to the opposite one in a controlled way. Four half round drums are used to guide patchcords entering from either left or right side.

Drums can be rearranged in such a way to manage fibres in a horizontal way. Available in different heights. Design allows easy access and positive fibre management for incoming and outgoing fibres. Front cover protects the jumpers when open frames are used.

KEY FEATURES AND BENEFITS

19" and ETSI shelves are available

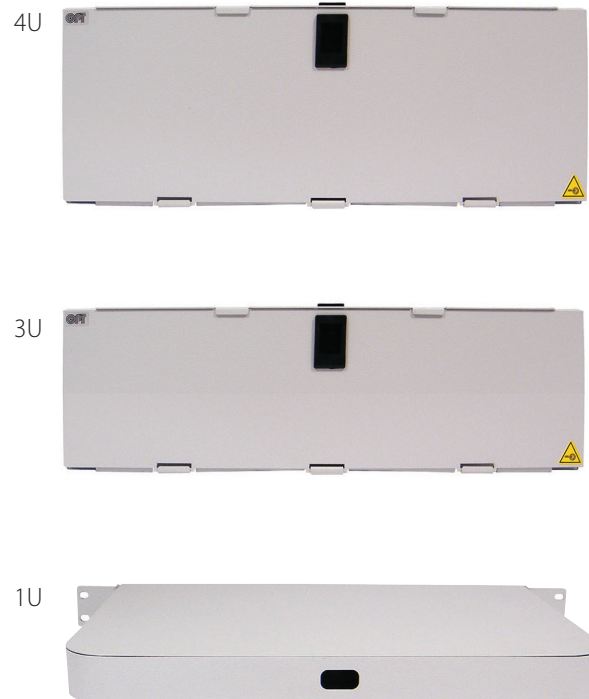
Entrances/Exits both left and/or right sides

Drums to ensure bend radius protection

APPLICATIONS

Within racks or outdoor cabinets

PARAMETRI	JMD11	JMI 3	JMM 3	JMM 4
Subrak type	19"	19"	ETSI	ETSI
Units Number	1U	3U	3U	4U
Height	44 mm	124 mm	124 mm	174 mm
Width	445 mm	445 mm	495 mm	495 mm
Depth	265 mm	265 mm	265 mm	265 mm
Storage Capacity	75 mt	150 mt	160 mt	300 mt
Material	Mild steel			
Colour	Powder coated RAL 7035			



OPTOTEC PN	REFERENCE PN	DESCRIPTION
2500173	FOCUS-SUBRA-JMD11	1HU 19" sliding shelf
2500154	FOCUS-SUBRA-JMI3	3HU 19" shelf
2500156	FOCUS-SUBRA-JMM3	3HU ETSI shelf
2500157	FOCUS-SUBRA-JMM4	4HU ETSI shelf